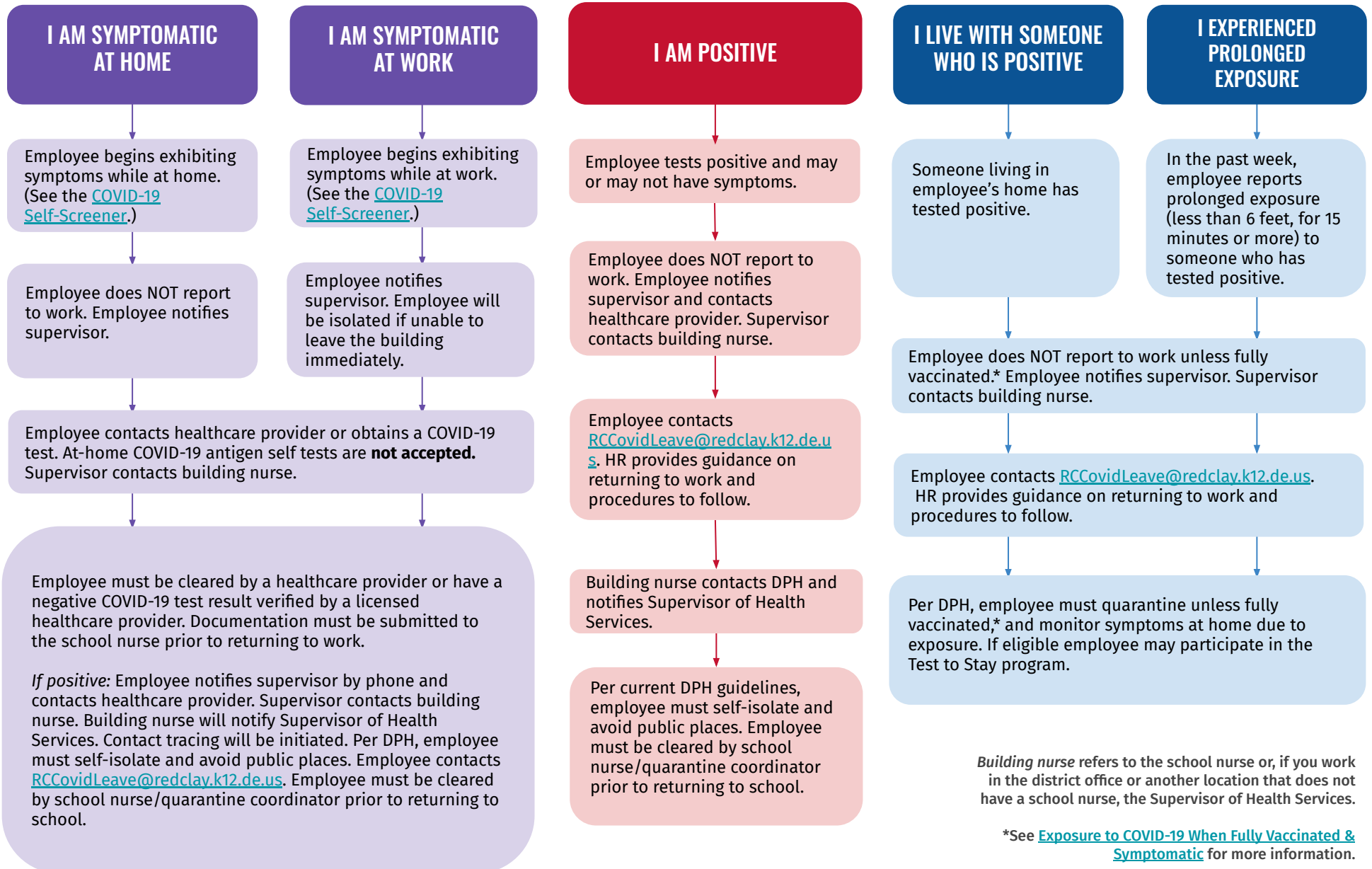


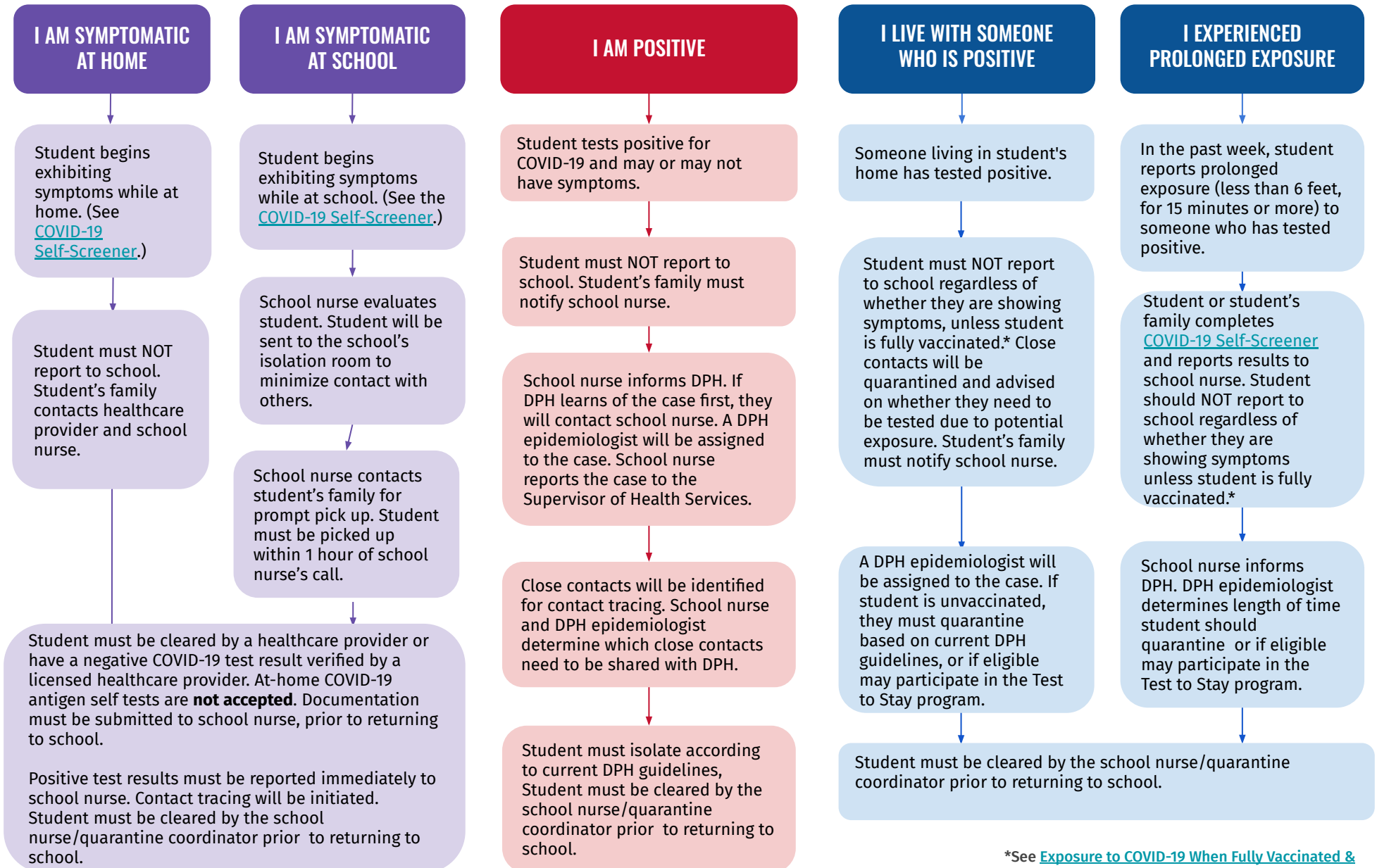
COVID-19 Process Map for Red Clay Staff

Updated: January 1, 2022



COVID-19 Process Map for Red Clay Students

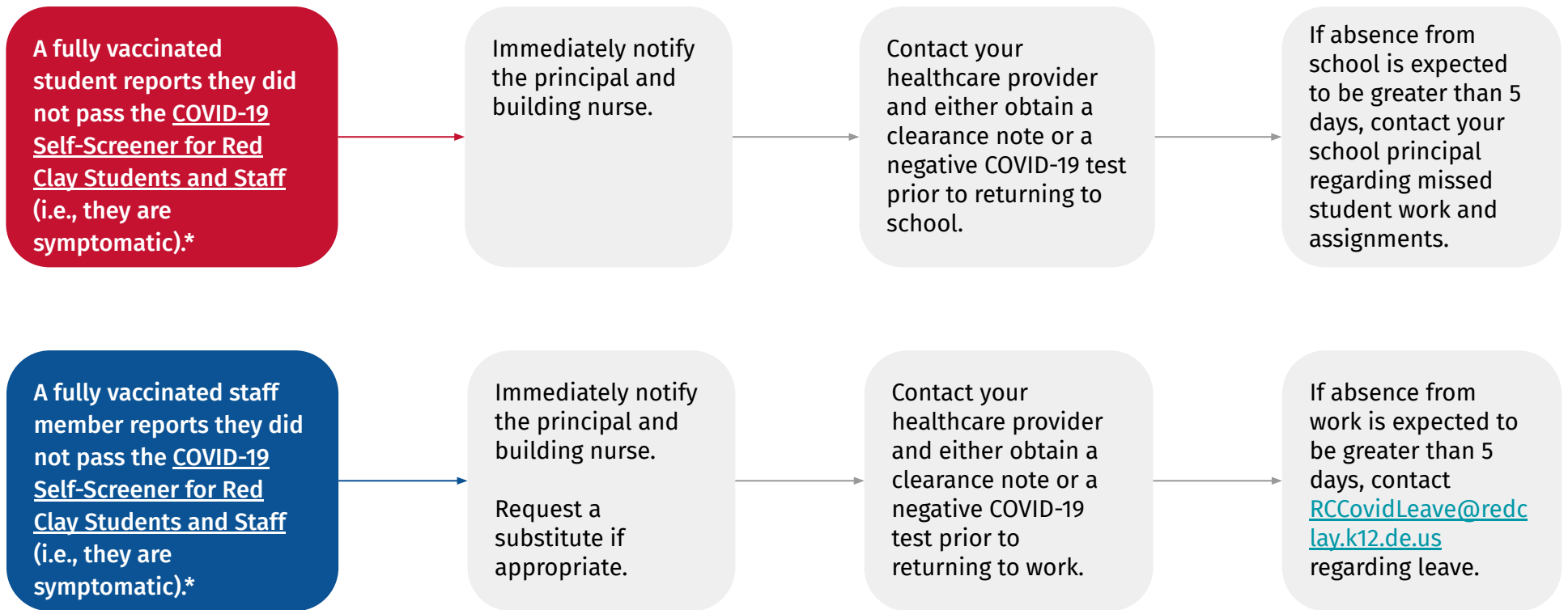
Updated: January 1, 2022



*See [Exposure to COVID-19 When Fully Vaccinated & Symptomatic](#) for more information.

Exposure to COVID-19 When Fully Vaccinated & Symptomatic

Updated: January 1, 2022



Fully vaccinated is 14 days after your second shot of Pfizer or Moderna, or after your single shot of Johnson & Johnson within the last 6 months or you have received a booster vaccine.

Building nurse refers to the school nurse or, if you work in the district office or another location that does not have a school nurse, the Supervisor of Health Services.

*This process applies to fully vaccinated students and staff members who are symptomatic. If a fully vaccinated student or staff member is *asymptomatic*, they may report to school/work but they must continue to follow guidelines for mask wearing and physical distancing. In addition, they should be tested on day 5 post exposure if possible.