

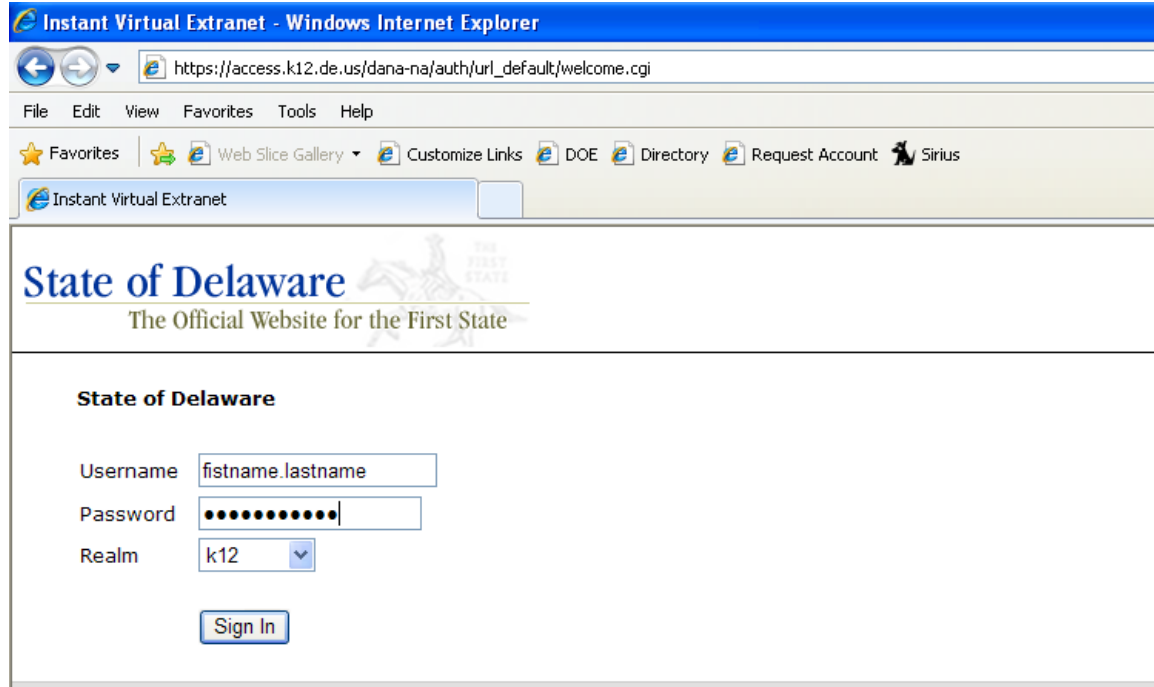
Your SSL VPN account is ready for your use.

Go to web site: <https://access.k12.de.us>

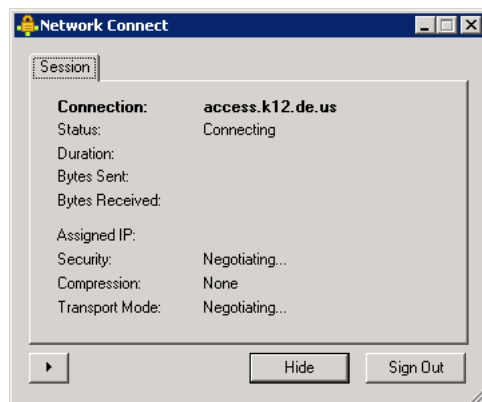
Log in with first name . last name, for example *john.doe*  
and your network password.

*(THE SAME USERNAME AND PASSWORD YOU USE TO CHECK EMAIL)*

Select the **k12 realm**



At this point, Juniper Network Connect will load, allow this to happen. It may take a few minutes.

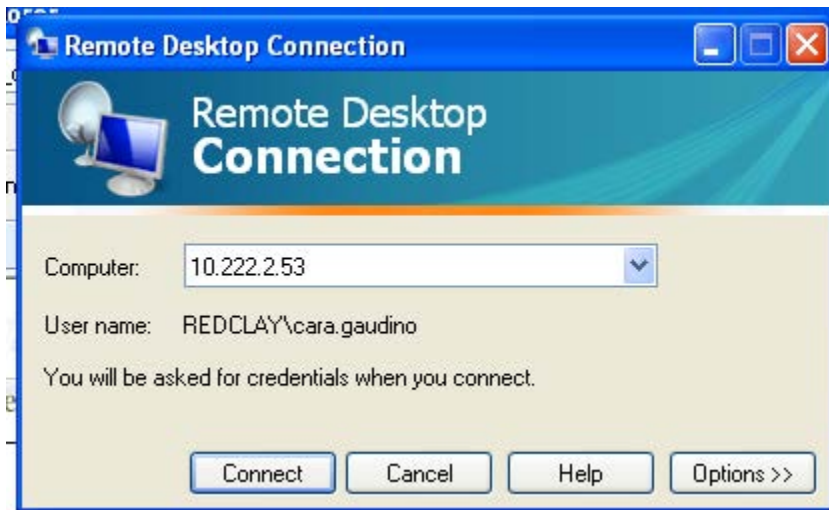


When complete, you will get a yellow pad lock in your bottom right system tray.  
This completes the SSL VPN logging in. At this point you can connect to machine that was requested.

Open up Remote Desktop Connection. This is TYPICALLY located in the start menu under *Accessories>Communications*  
However, depending on your operating system and settings it may not be there. If you can't locate it, the file path is: *C:\WINDOWS\system32\mstsc.exe*  
If you go to Start>Run and type: *C:\WINDOWS\system32\mstsc.exe* the program should come up

From here you need to type in the IP address of the Remote Access Server

10.222.2.53



Log into the computer.

